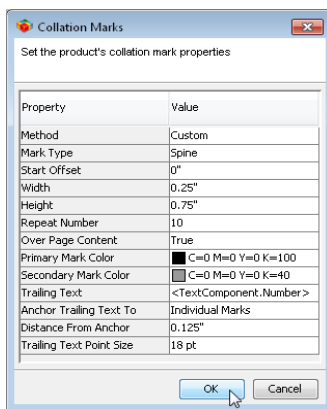


What's New in **metrix** 2011.0

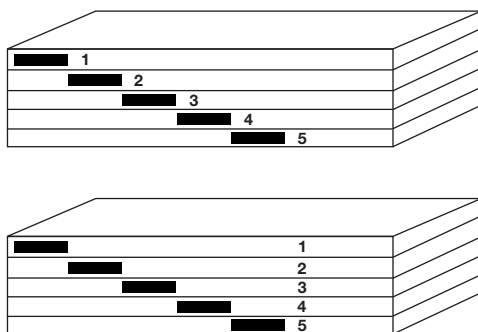
New Features

- **Automatic or Custom Collation Marks** – Metrix can now add automatic “set-and-forget” collation marks to your bound products. Collation marks can still be adjusted manually, when necessary, for existing products or new products. Though collation marks are often only used on perfect bound products, you might find it useful to put them on all bound products since Metrix makes it so easy.

You can control the placement of the mark on the spine (perfect bound) or jog (saddle-stitched) edge, and the distance of the mark from the edge. You can set the height, width, and color of the marks, including a secondary color for nested components of perfect bound products.



Trailing text – the signature number or a wide selection of other text variables – can be set for size, distance from the mark, and whether the text will follow the individual marks or the whole block of marks.



Whether you let Metrix add “set-and-forget” collation marks for you, or you adjust them manually, you can have complete control over the collation marks on your products, and it's never been easier!

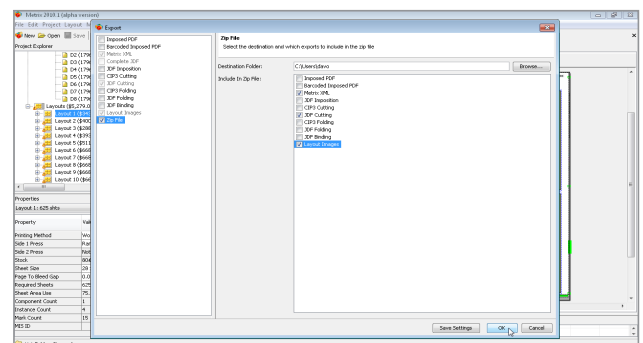
- **Management Information System Selection** – Metrix 2011.0 has been optimized with respect to integration with certain MIS systems. Selecting your MIS will ensure the best integration – now, and in future releases of Metrix. Please contact LithoTechnics support if your MIS vendor is not listed and you would like to see better integration between your MIS and Metrix.

- **Zip File Export** – Metrix now exports multiple data types and compresses them into a single Zip file with just one click.

The data exported in the Zip File can include some or all of the Export file types:

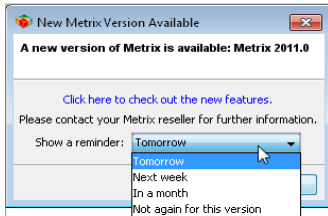
- Imposed PDF
- Barcoded Imposed PDF
- Metrix XML
- JDF Imposition
- CIP3 Cutting
- JDF Cutting
- JDF Folding
- JDF Binding
- Layout Images

Zip File export now appears as one of the options in your export dialog box, depending upon the MIS system selected during the Metrix 2011.0 installation or upgrade.

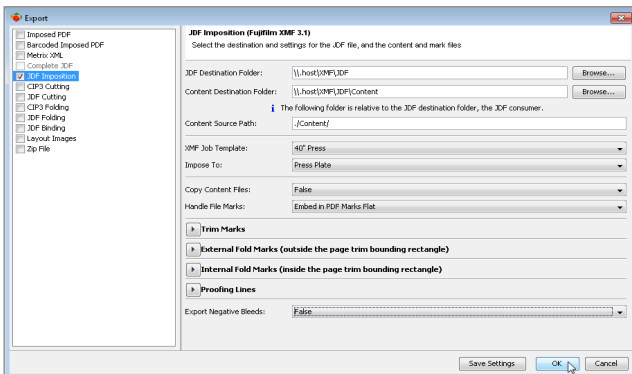


What's New in **metrix** 2011.0

- **Automatic Version Checking** –When Metrix detects that a newer version of Metrix is available, a dialog box appears giving you the opportunity to check out the features of the new version. You can also select the frequency of reminders.



- **Fujifilm XMF 3.1** – Metrix 2011.0 now has two workflow preferences for Fujifilm XMF: “Fujifilm XMF 3.0 or Earlier”, and “Fujifilm XMF 3.1”. When Fujifilm XMF 3.1 has been selected as the Prepress Workflow, multiple plate and sheet sizes are permitted in a single file.



- **Agfa Apogee** – Agfa Apogee is now one of the possible selections on the prepress workflow list in the User Preferences dialog, ensuring better integration between Metrix and Agfa Apogee.

When Agfa Apogee has been selected as the Prepress Workflow, Metrix inserts special “work style” tags in the JDF Imposition file that assist proper positioning for double-sided proofing. Customer information is also added to the JDF Imposition, for better integration with Apogee, when all products in the project have the same Customer.

- **New Text Variables** – New Text Mark Variables have been added that can be used as Text Mark variables, Barcode Mark variables, and/or Trailing Text for Collation marks. The variables include:
 - <Product.TotalQuantity> is replaced with the total number of products being produced.
 - <Product.TotalQuantityPlus> is replaced with the total number of products being produced AND the difference between that and the required quantity in brackets. For example: 5,000 (250 Extra).
 - <Layout.Press.Name> or <Press.Name>
 - <Component.Fold.Name>
 - <Product.BindingMachine.Name>
 - <Stock> which can be used as shorthand for <Layout.Stock>
- **Clone Multiple Products Option** – Metrix can now clone multiple products in one action using the Project > Clone Multiple menu, or the Clone Multiple pop-up menu. The number of clones produced is use-definable.
- **New Keyboard Commands** – Metrix now includes more keyboard commands for even faster layout and production.
 - Export – Ctrl-E on Windows or Cmd-E on Mac.
 - Edit Layout Production Method – Ctrl-Shift-E on Windows or Cmd-Shift-E on Mac.
 - Automatic Production Plan – Ctrl-Alt-A on Windows or Cmd-Option-A on Mac.
 - Automatic Production Method – Ctrl-Shift-P on Windows or Cmd-Shift-P on Mac.
 - Rotate instance 90° CW – Ctrl-R on Windows or Cmd-R on Mac.
 - Rotate instance 90° CCW – Ctrl-Shift-R on Windows or Cmd-Shift-R on Mac.