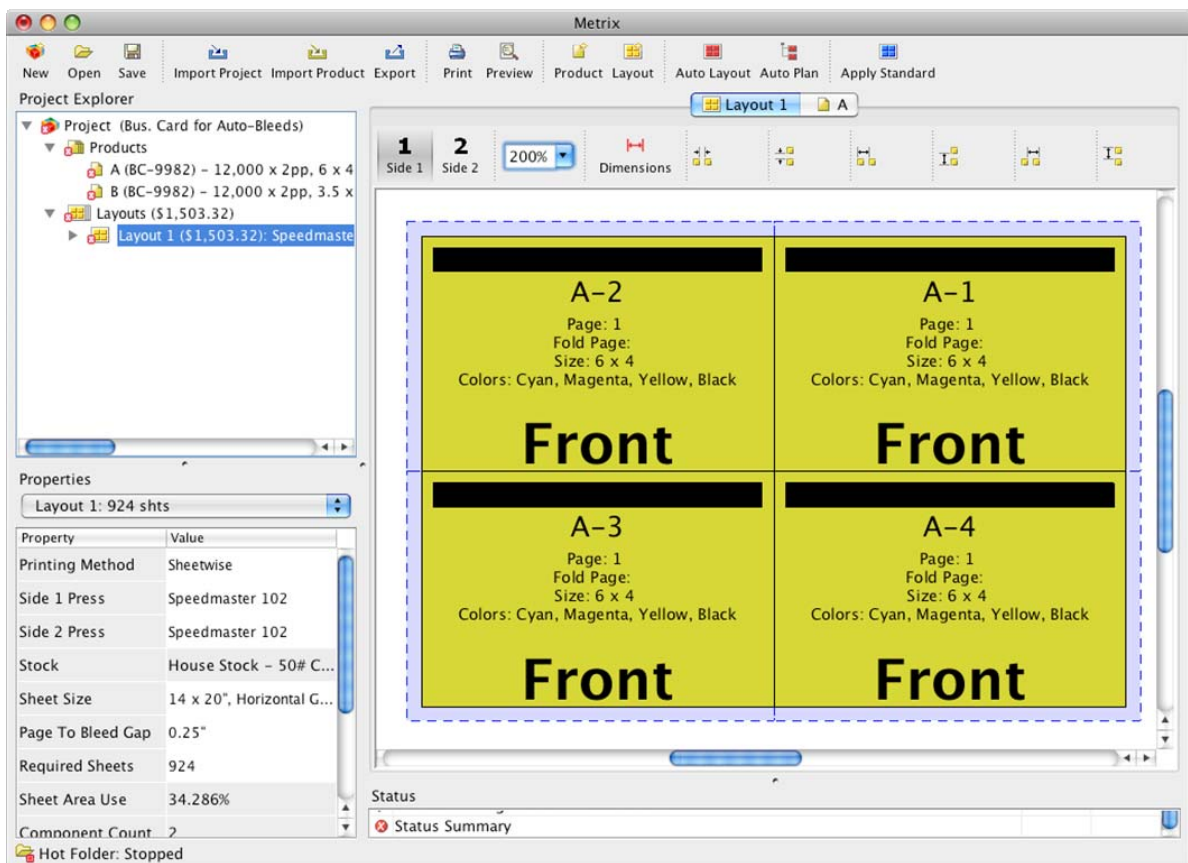


What's New in Metrix 3.5?

LithoTechnics Metrix version 3.5 has many new features - this document lists the main ones.

Auto Bleeds

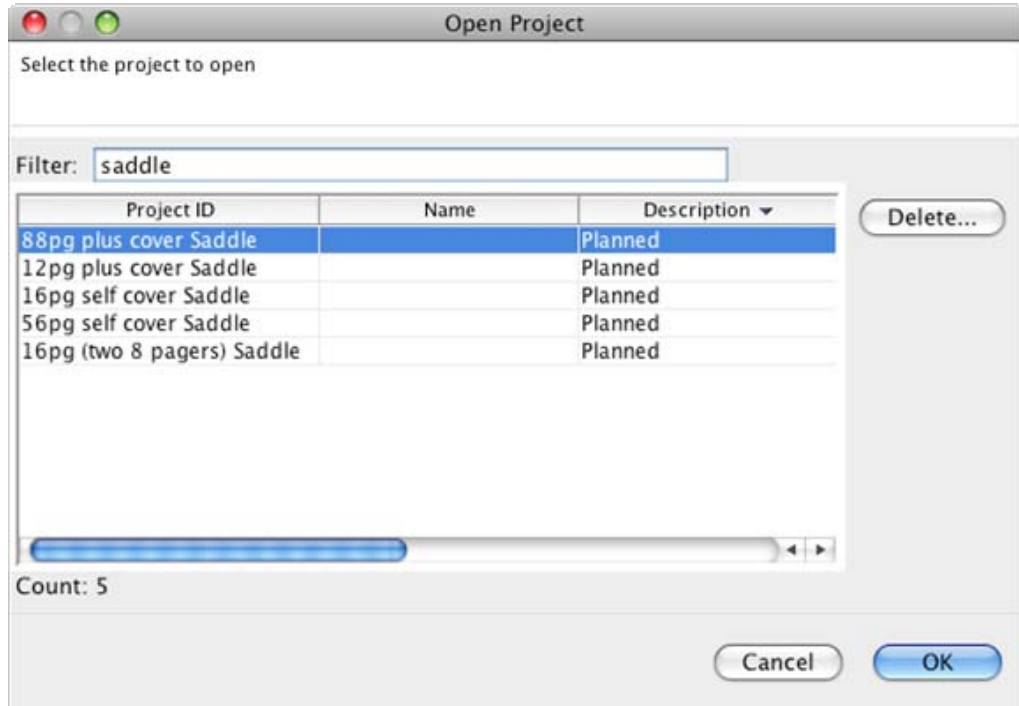
The Auto Bleeds function is a hot new feature. Projects now have a new property, "Stop Bleeds Overlapping", and when this property is true (the default for all old and new projects) Metrix will dynamically analyze all page bleeds and if possible automatically stop all pages bleeding into one another. This feature makes it easy to impose a block of cards with single-cut gutters between each of them but a bleed gutter outside the whole block.



For more information see the Auto Bleeds movie at: www.lithotechnics.com/learning/3.0/

Open Project Dialog Filter

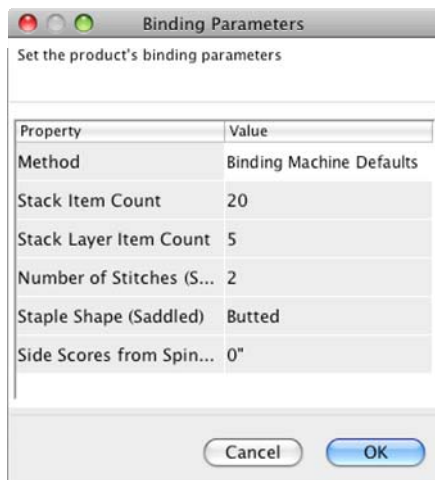
Type any number or text into the Filter field and Metrix will filter the project list to only show projects containing that text somewhere in the main project fields.



JDF Binding Support

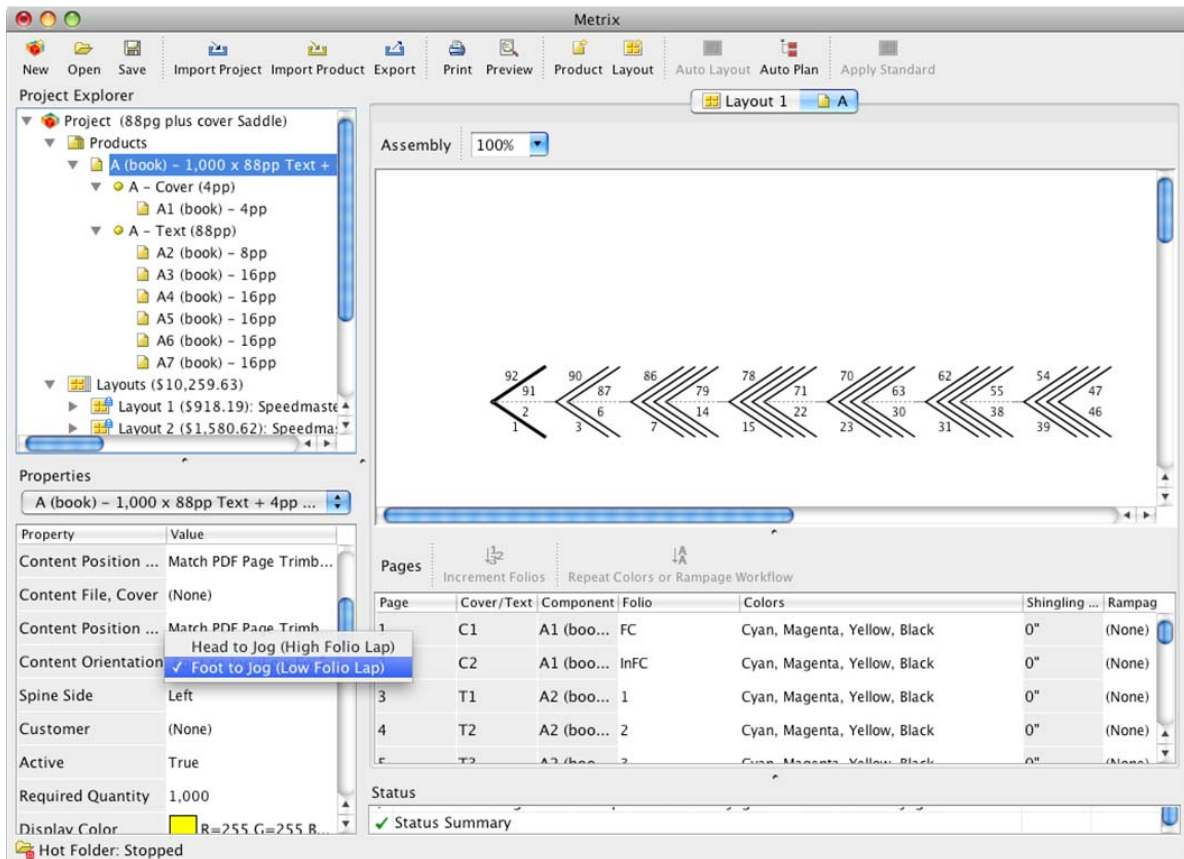
The old "Horizon JDF" export has been replaced with a more generic "JDF Binding" option which can export JDF for both saddle-stitched and perfect bound products.

Bound products now have a new property, "Binding Parameters", which can be used to display a dialog enabling the user to customize the binding parameters for that product. These product specific binding parameters are used when exporting JDF.



Jog to Foot Support

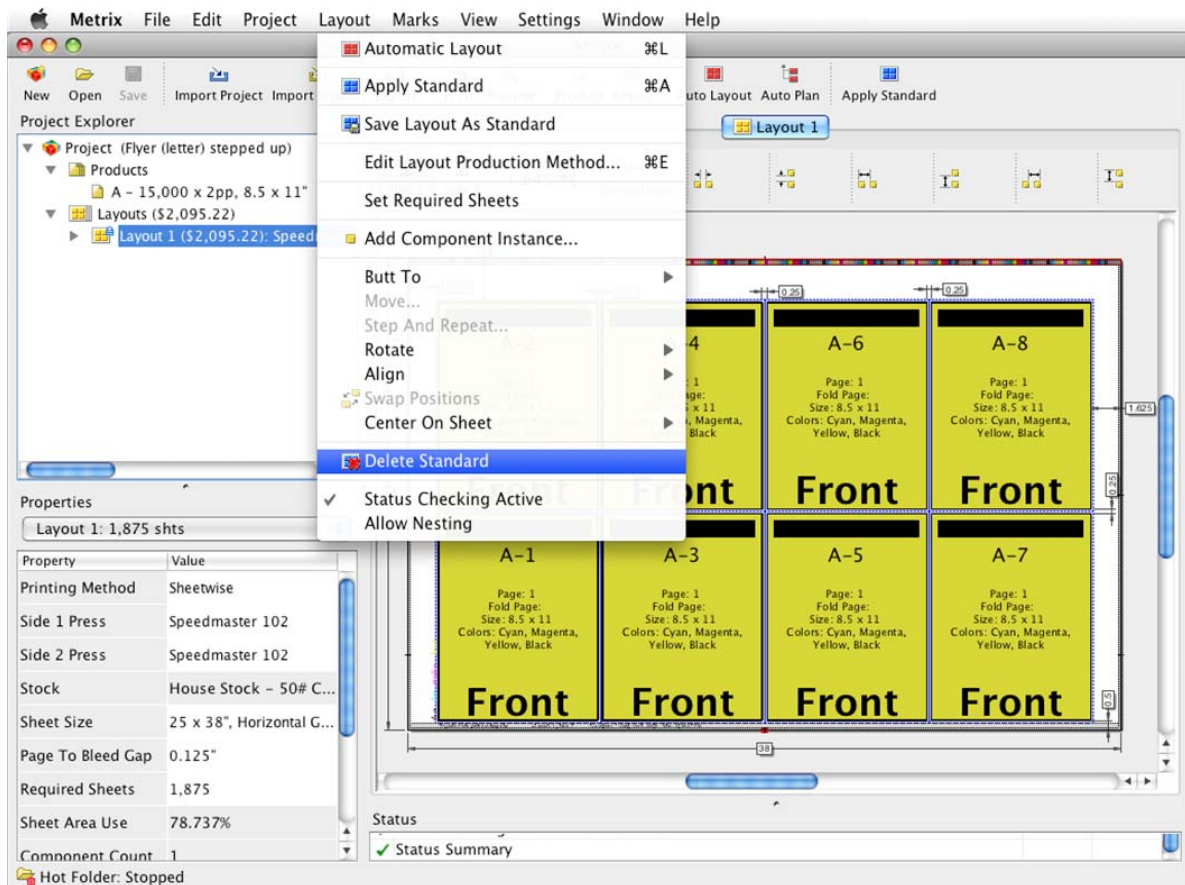
To support "jog to foot" or "low folio lap" jobs, bound products now have a Content Orientation property. By default all existing bound products are "Head to Jog (High Folio Lap)" but users can simply change the property to "Foot to Jog (Low Folio Lap)" and Metrix takes care of everything else.



For more information see the Foot to Jog movie at: www.lithotechnics.com/learning/3.0/

Improved Standards Management

Users can now delete unwanted standards using the 'Layout > Delete Standard' menu item. The menu deletes the standard matching the current layout's standard if one is found.

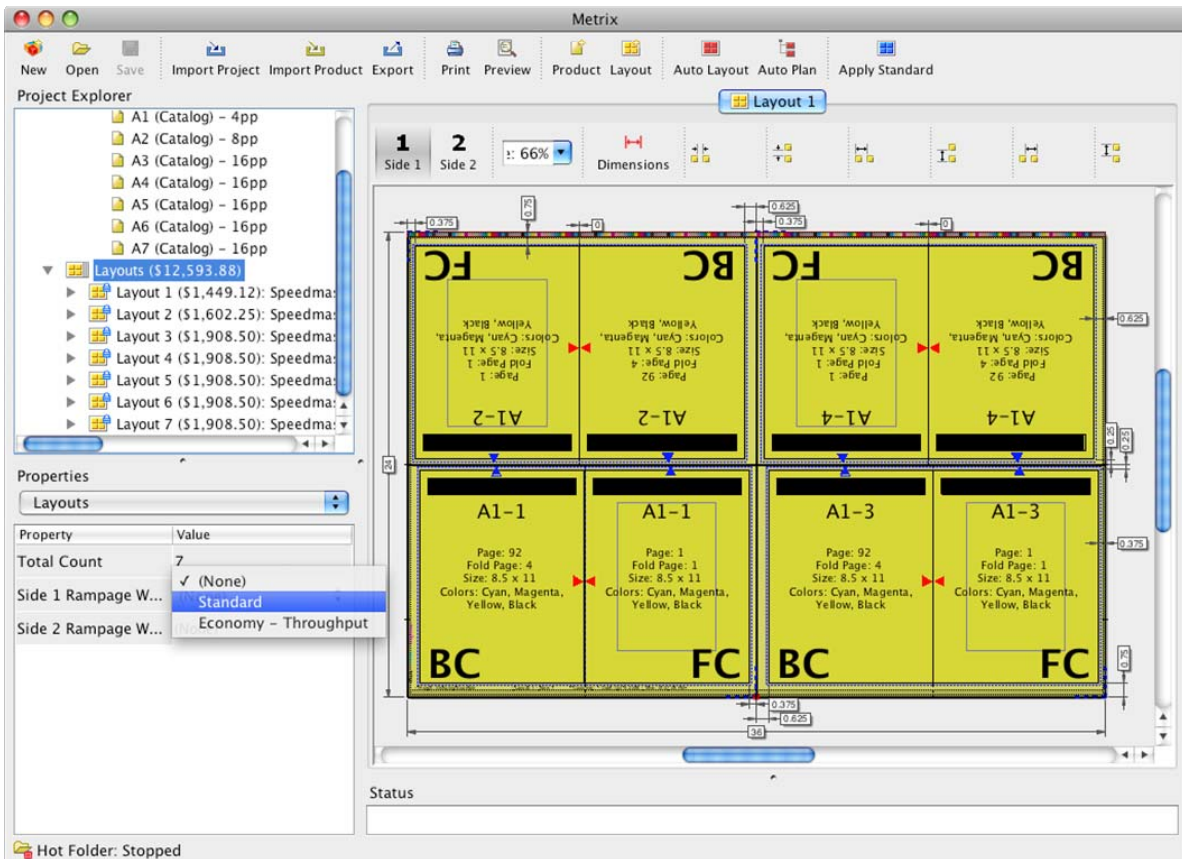


Also, now when editing a Press or Binding Machine that is referenced by one or more standards, the user is prompted for whether the standards should continue to reference the device or become invalidated.

Improved Rampage Integration

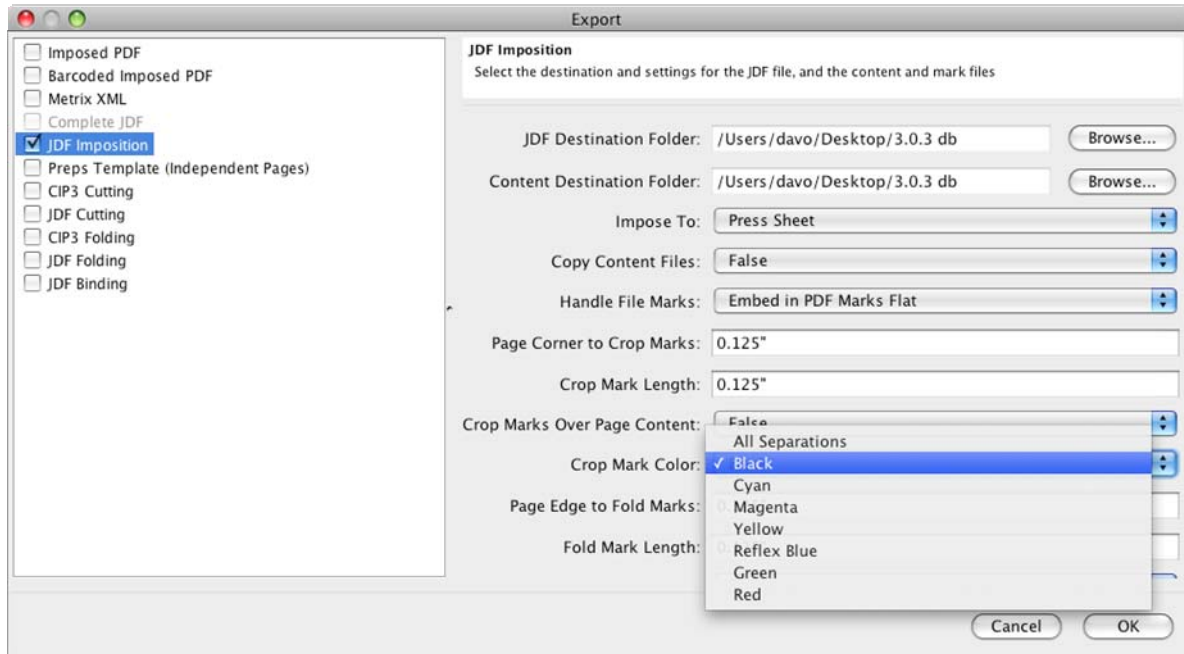
Rampage users can now edit the Rampage Workflow of all pages of all products in the project at once using the new "Page Rampage Workflows" property of the Products node in the Project Explorer.

Rampage users can also set all layouts in the project to the same Rampage Workflow using the new "Side 1 Rampage Workflow" and "Side 2 Rampage Workflow" properties of the Layouts node in the Project Explorer.



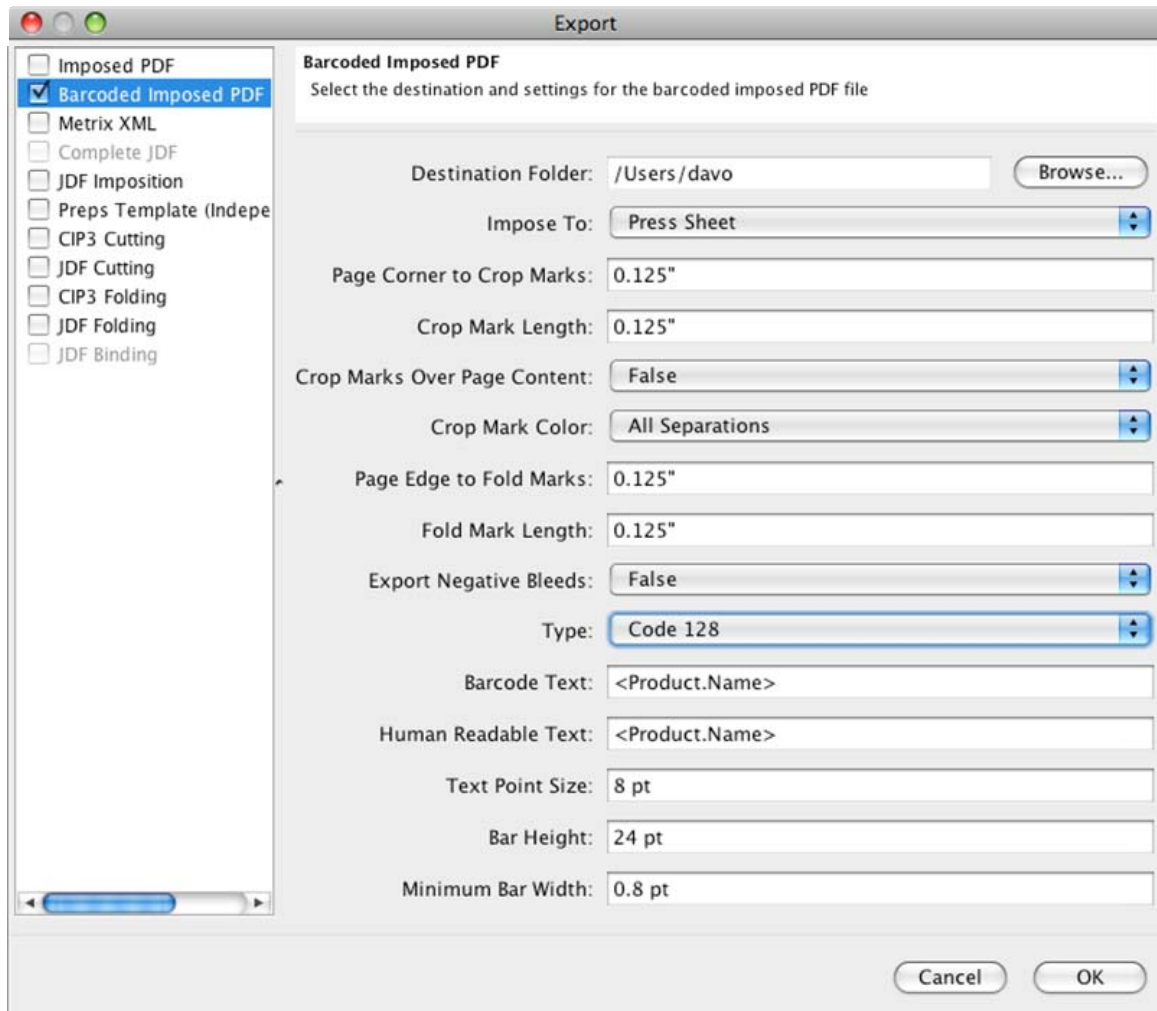
More Flexible Crop Marks

Users can now control the color of crop marks, and whether crop marks should go over or under the content.



Added Human Readable Text to the Barcoded Imposed PDF

Users can now make the human readable text under the barcode different to the text that makes up the barcode itself.



Other Features & Modifications

We added the Screen Trueflow prepress workflow option to the User Preferences. If selected, the Screen Trueflow workflow has a simplified JDF Imposition export user-interface that works with Trueflow without requiring the JDF file be drag-n-dropped into the Trueflow user-interface.

The report generator has been modified so layout diagrams now move to a new page if there's less than 50% of the imaginable height of the page available to draw it.

The imposed PDF engine has been enhanced so Metrix can handle larger PDF files.

All line, text, and rectangle marks, including crop marks, now overprint other things in the imposed PDF export - i.e. they no longer knock out things underneath them.

All users can now adjust the horizontal positioning of the press sheet on the plate when exporting PDF or JDF Imposition data to the plate. The horizontal position is controlled by five new press properties:

- Horizontal Sheet Offset Anchor
- Horizontal Sheet Offset
- Horizontal Sheet Offset Mirror
- Horizontal Device Compensation
- Horizontal Device Compensation Mirror

Support for Microsoft SQL Server has been enhanced.

We fixed a bug in the JDF Cutting export that stopped Metrix from exporting cutting data for all but the first layout in a project.

More information about these features and how they work will be explained in the documentation that will accompany the final release. If you have any questions please email: infoEmail08@lithotechnics.com