

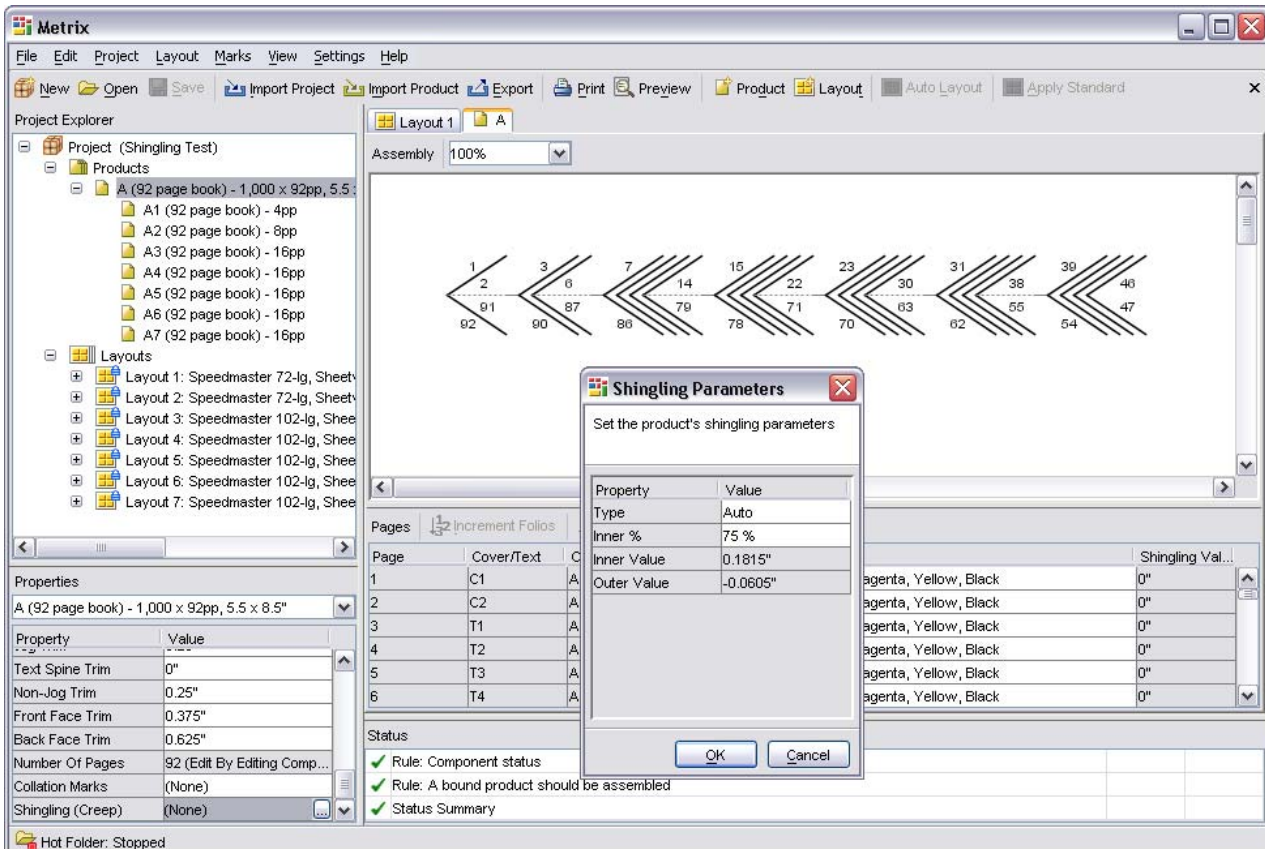
What's New in Metrix 2.1

Creep/Shingling Adjustment

Metrix 2.1 introduces the ability to compensate for page creep in bound products. The problem is encountered when producing larger saddle-bound products, or in general with products with thick paper stock. In a saddle-stitched book, the closer to the inside of the book the more each page is pushed away from the spine. If this is not compensated for, when the book is finally trimmed the outer margins of pages in the middle of the book can be visibly narrower than those near the outside of the book. In extreme cases, if the margins are reduced enough, folios or copy can even be lost.

Shingling is the procedure whereby page content is incrementally pushed towards the spine. It is a compromise made to reduce the obvious visual problems with progressively narrower outer margins.

Metrix 2.1 can calculate the amount of shingling automatically, users can specify it manually, or a combination of automatic and manual shingling can be used.



Metrix 2.1 does not simply apply a global formula to calculate shingling. Metrix 2.1 examines each set of 4 pages and factors in the potential varying stocks in the job and applies this to each set of 4 pages separately. If all the pages in a project are the exact same stock thickness, then the compensation will be linear, but if any pages are on a different stock, the shingling will be non-linear.

Metrix 2.1 also allows a weighing factor to be applied resulting in some of the shingling being applied to the inner pages and some to the outer, based on a simple user-defined percentage.

The user also has the ability to select individual pages and manually set the creep to any value. This is particularly useful for dealing with page spreads where the shingling should be set to zero.

Users can even set a preference for Metrix to always automatically compensate for creep, which it will do based on the unique properties of each particular job - stocks, binding method, and binding sequence. This eliminates the need for users to ever consider such matters, while significantly increasing the quality of all bound jobs produced.

Page shingling calculated by Metrix is applied to all imposed PDF files Metrix exports, and well as the JDF Imposition and Complete JDF files Metrix exports.

Find out more at:

www.lithotechnics.com

Copyright © 2007 LithoTechnics Pty Limited. Metrix is a trademark of Outback Software Pty Limited and may be registered in certain jurisdictions. Other company, brand, or product names are for identification purposes only and may be trademarks or registered trademarks of their respective holders. Data subject to change without notice.

January 26, 2007