

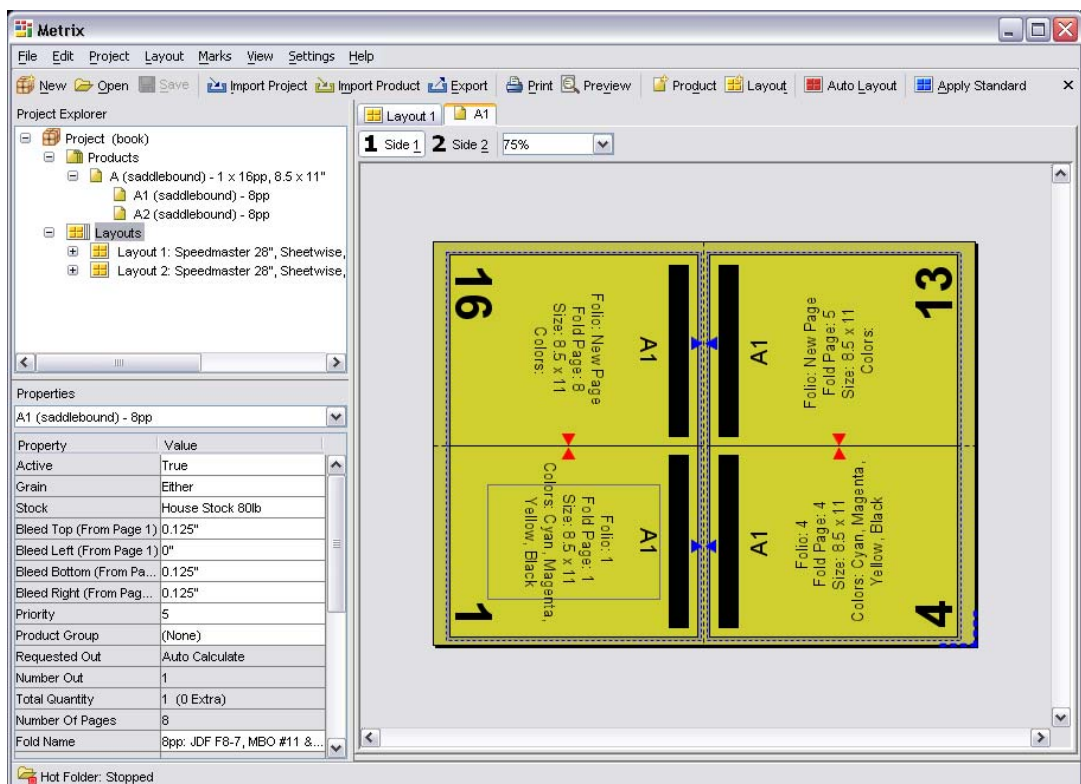
# What's New in Metrix 2.0

## Bound Work Support

Metrix 2.0 introduces the ability to plan bound work as well as flat and folded work. This exciting leap forward means that Metrix is now able to handle all the major categories of work typically done at a commercial, sheetfed printer.

Metrix 2.0 is able to accommodate self-cover or text-plus-cover projects, supporting both saddle and perfect binding styles.

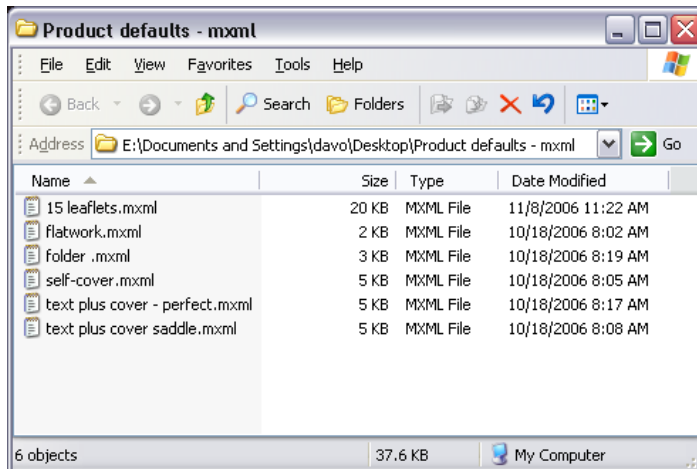
As would be expected with such a flexible tool as Metrix 2.0, projects involving a mixture of bound, flat and folded work are easily accomplished.



## MXML – Metrix XML Specification

In addition to the ability to import and export industry standard JDF files, Metrix 2.0 introduces a Metrix-specific XML format, providing the ability to define job data in a way precisely targeted to the capabilities and flexibility of Metrix. For companies who need to bridge the gap between their homegrown MIS system and job planning and production, the Metrix XML format is a perfect solution.

The ability to export MXML files gives Metrix users the option of storing Metrix objects, from simple flat products to entire projects, for quick import and re-use. This exciting new format has many powerful uses today and into the future.



## Local or Network Hot Folder

Metrix 2.0 includes a powerful new hot folder mechanism that allows Metrix 2.0 to recognize incoming JDF or MXML files to initiate a new project. The hot folder can be on the local machine, or can be watched across a network. If a project is currently open, Metrix waits until the user completes and closes the project, then immediately creates a new project based on the incoming data.

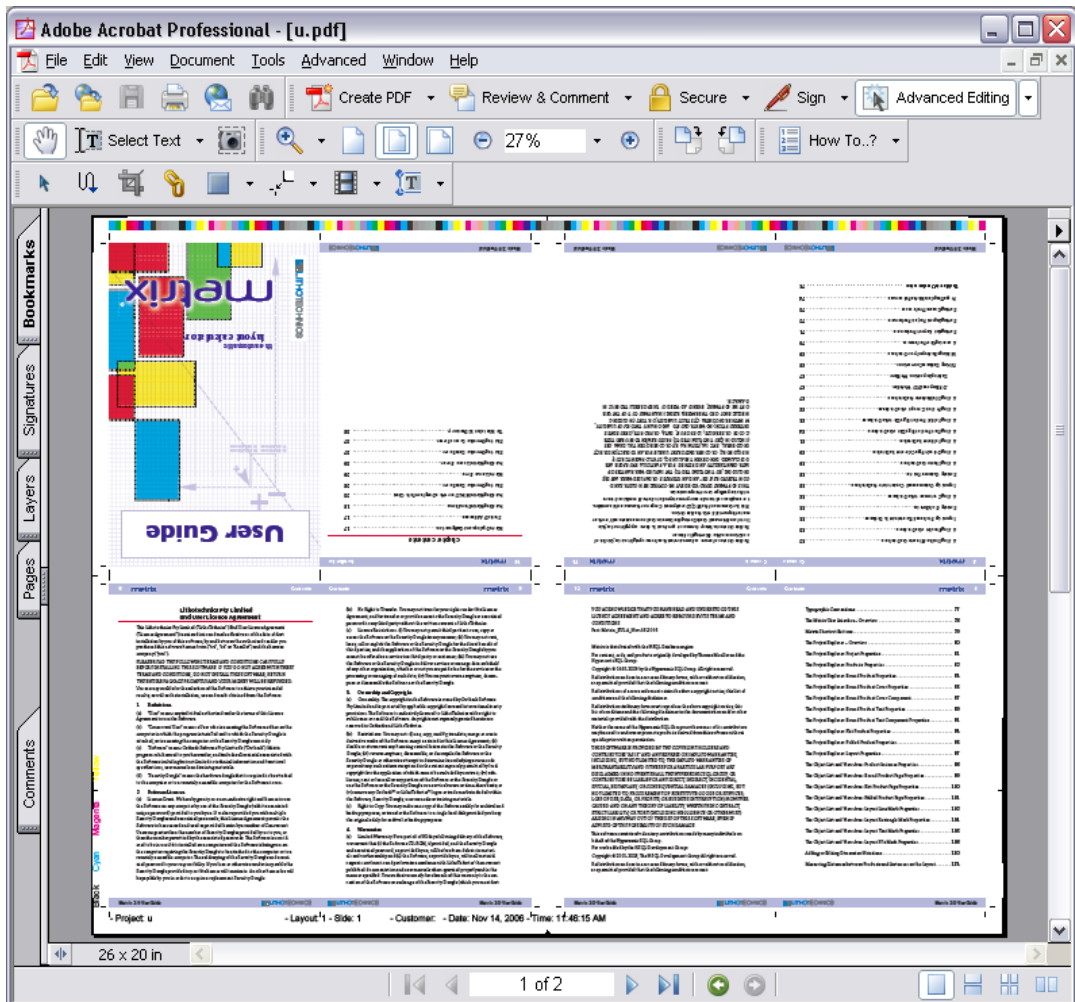


### PDF Source Linking / Imposed PDF Output

With Metrix 2.0 the user has the option of linking PDF source files to each product. This serves two purposes:

1. At output time users can choose to create a fully-imposed PDF flat for every press sheet in the project;
2. If the user has a JDF-enabled prepress workflow, Metrix can export a 'populated' JDF, saving even more time and potential for error in prepress.

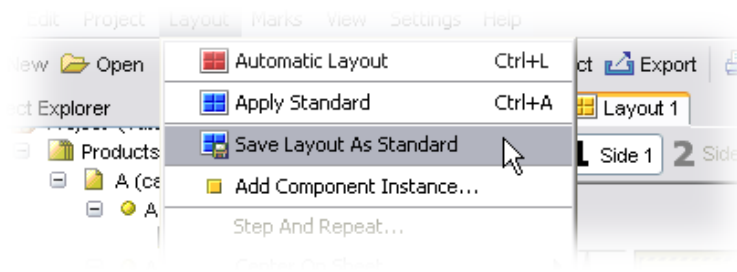
The power of this feature cannot be underestimated. Metrix 2.0 clearly has the ability to completely replace existing desktop imposition software in the prepress department. Metrix 2.0 projects can be sent directly into the workflow, bypassing this now redundant step.



## "Standard" Layouts

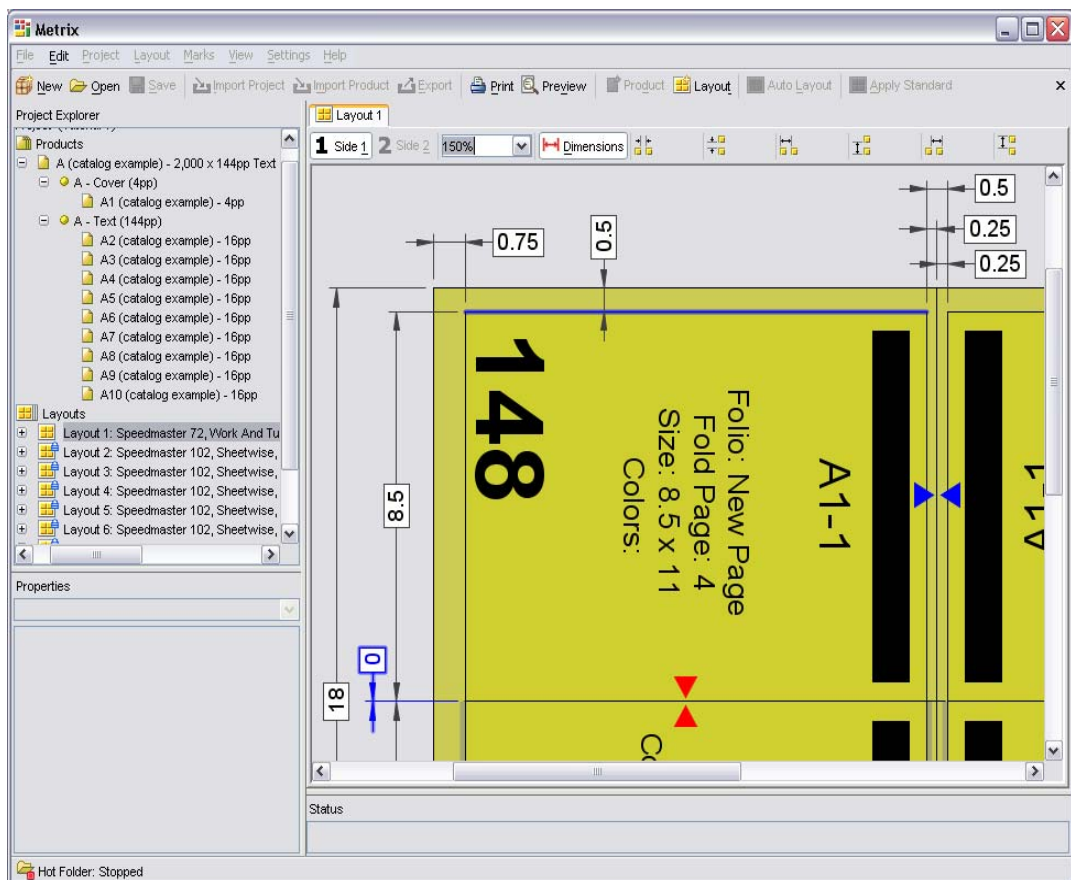
The automatic layout calculator in Metrix 2.0 enables jobs to be planned dynamically, with incredible speed and accuracy. Customers who produce unique work, project after project, find Metrix incredibly powerful, yet recognize that some projects would benefit from an underlying mechanism of stored "standard" layouts. This is especially true for standard sized bound work layouts.

Metrix 2.0 introduces this ability. Once a layout has been completed, if it is considered something standard, users can choose to save this new layout into the database as a Metrix Standard. Any time thereafter, when a project is being planned that fits within the parameters of the Standard, Metrix can automatically apply the Standard to all the appropriate layouts in the job. Metrix 2.0 really has the best of both worlds – a dynamic imposition calculation engine and a user-definable, standard layout database.



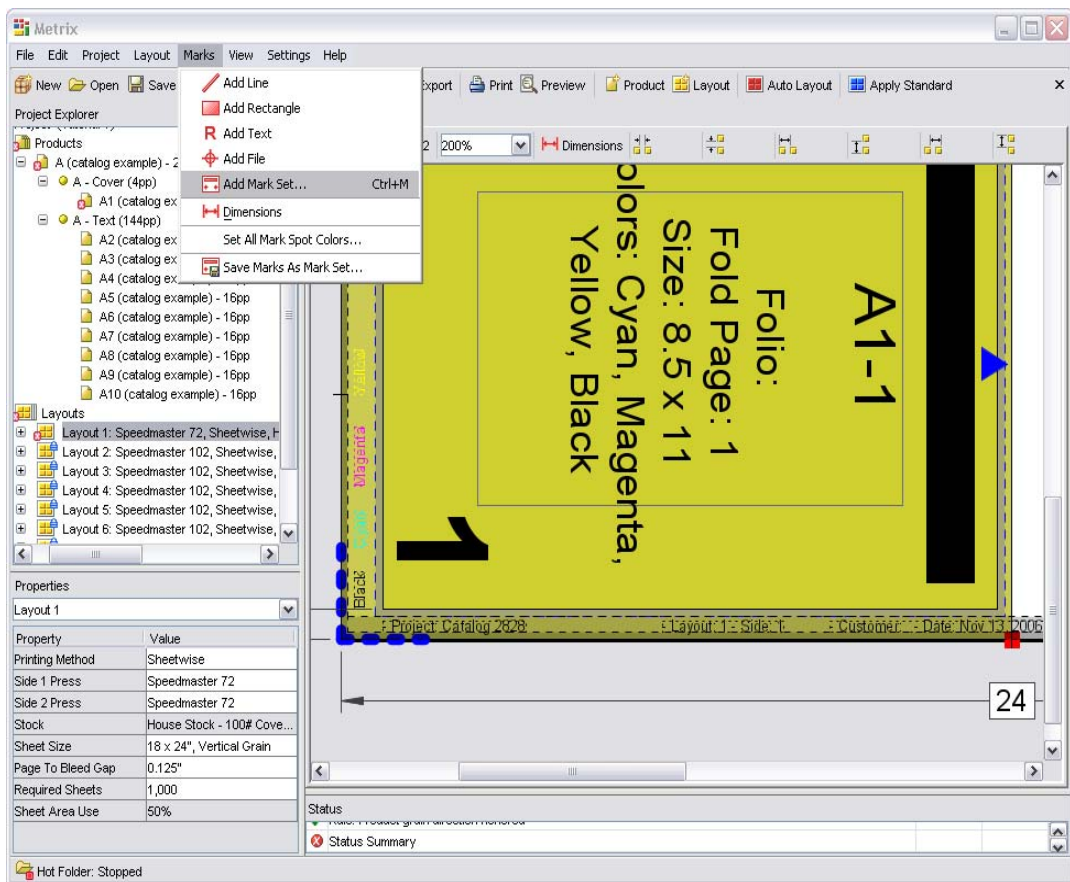
### Dimensions Tool

Metrix 2.0 allows users to interactively define all layout dimensions. This means users can fully customize their printed job layouts without un-necessary clutter. Dimensions are also stored as part of Standards, so once defined, they automatically appear every time the Standard layout is applied.



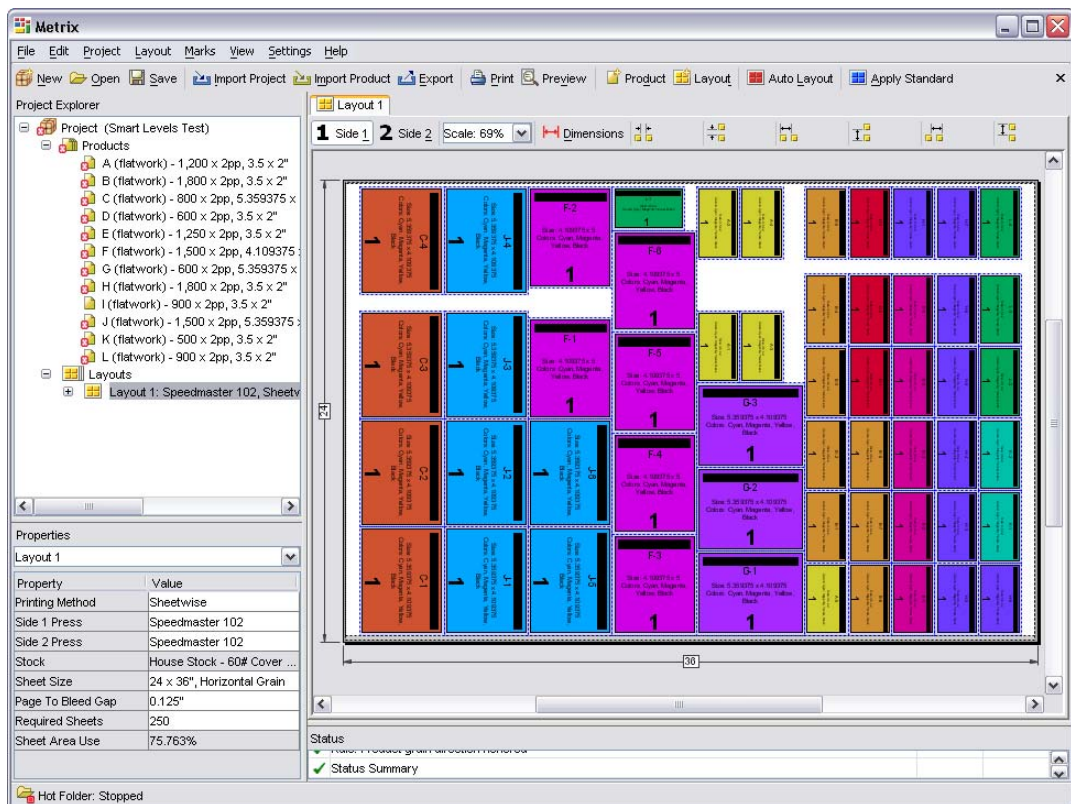
## Automated Marks Placement

The ability to define rules for press sheet marks placement is critical. Metrix 2.0 allows users to place marks with relative rules, and to save sets of marks for later re-use. This means reliable, consistent, instant mark placement, with the full ability to customize. Marks are also stored as part of Standards, so once defined, they automatically appear every time the Standard layout is applied.



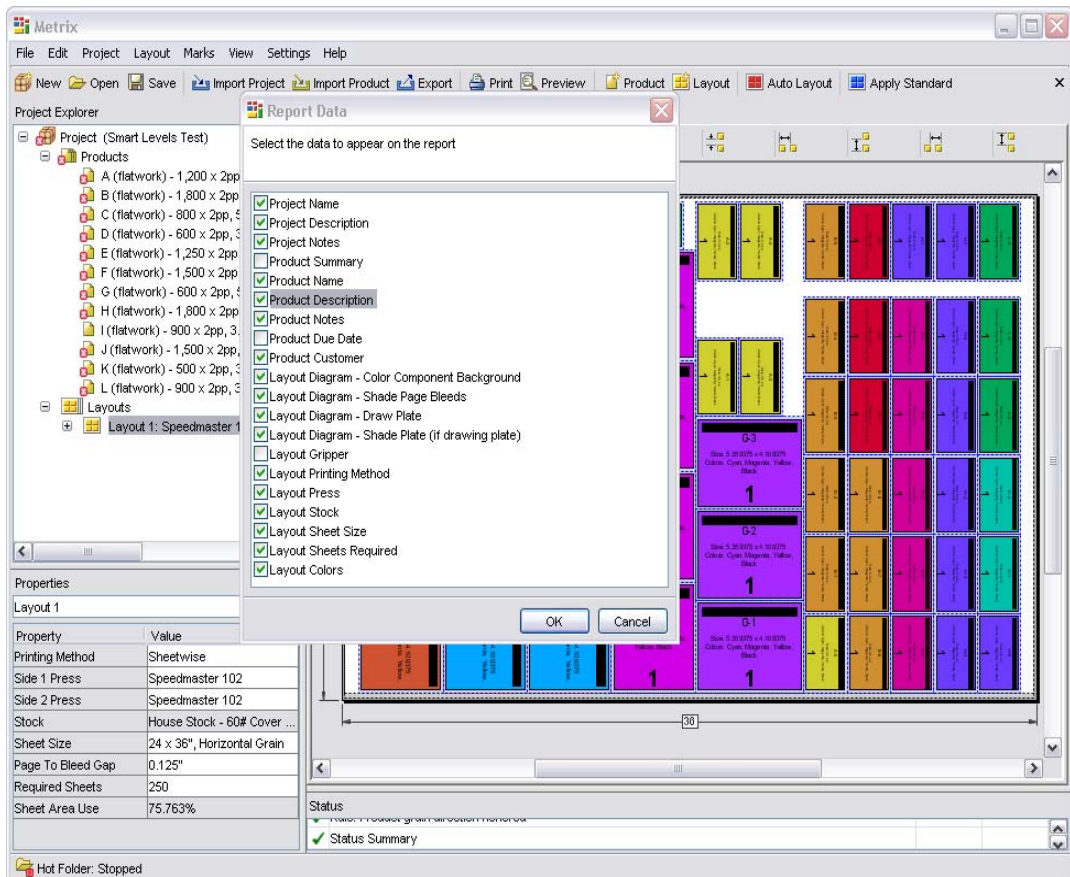
## Align Outside Edges

A very common procedure for gang printers is to perform a finishing-touch on the ganged imposition – taking the items closest to the edges of the press sheet and aligning them to take advantage of common cuts. The enhanced automatic layout calculator engine in Metrix 2.0 can accomplish this fully automatically.



## User-Definable and Gang-Style Job Printouts

Metrix has always had the ability to produce clean, readable and reliable job layout reports. Metrix 2.0 takes this even further with new options, in particular those that will be appreciated by users ganging multiple items on a press sheet.





## **New Metrix Editions**

Metrix 2.0 introduces new editions, with features and recommended retail pricing targeted to various segments of the industry:

### **Metrix Commercial**

The ideal version of Metrix for the general commercial printer. Accommodates both bound and flat or folded ganged work. Restricted to a maximum of 16 different products (jobs) per layout, each one or multiple times up as required.

### **Metrix Ganging**

Designed for gang printers, label printers, greeting card manufacturers, and others who don't need bound work functionality. Handles up to 160 different products (jobs) per layout, each one or multiple times up, but cannot create bound work jobs.

### **Metrix Max**

The top of the line. Metrix Max has the full capabilities of Metrix in one package.

### **Metrix Read Only**

Provides a read-only view of projects already in the Metrix database, and can also import MIS generated JDF files for viewing, and printing reports.

### **Mini Metrix S**

Perfect for small offset, on-demand and digital printers. Restricted to maximum of 21 x 21" (533.4 x 533.4mm) press-sheet, and has less export options than Metrix. The exports do include Imposed PDF.

### **Mini Metrix M**

Perfect for small offset, on-demand and digital printers. Restricted to maximum of 30 x 30" (762 x 762mm) press-sheet, and has less export options than Metrix. The exports do include Imposed PDF.

Find out more at:

**[www.lithotechnics.com](http://www.lithotechnics.com)**