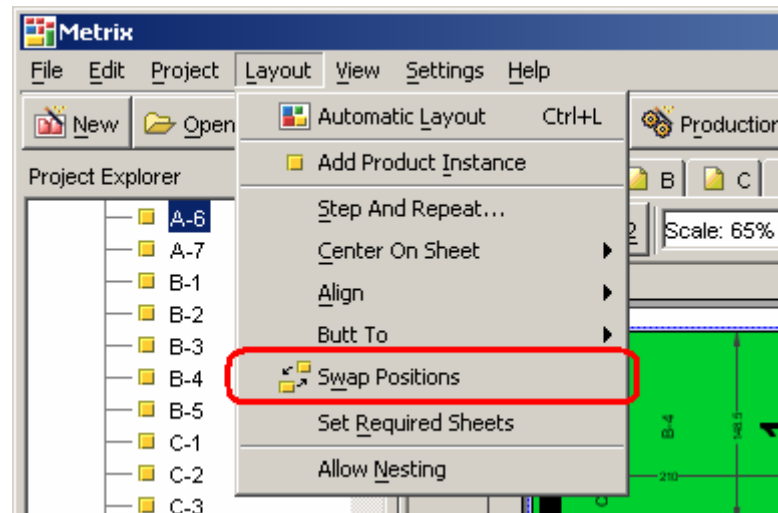


What's New in Metrix 1.6

New Swap Positions Command

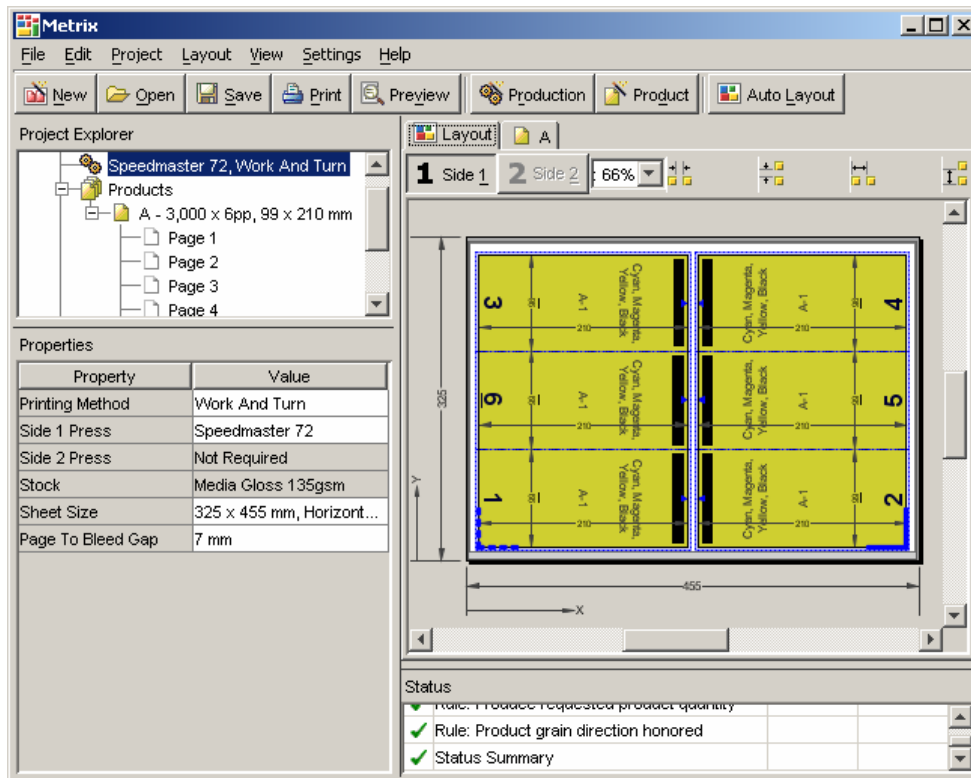
Metrix 1.6 adds a new Swap Positions command to the Layout menu. This command swaps the position of any two selected product instances.



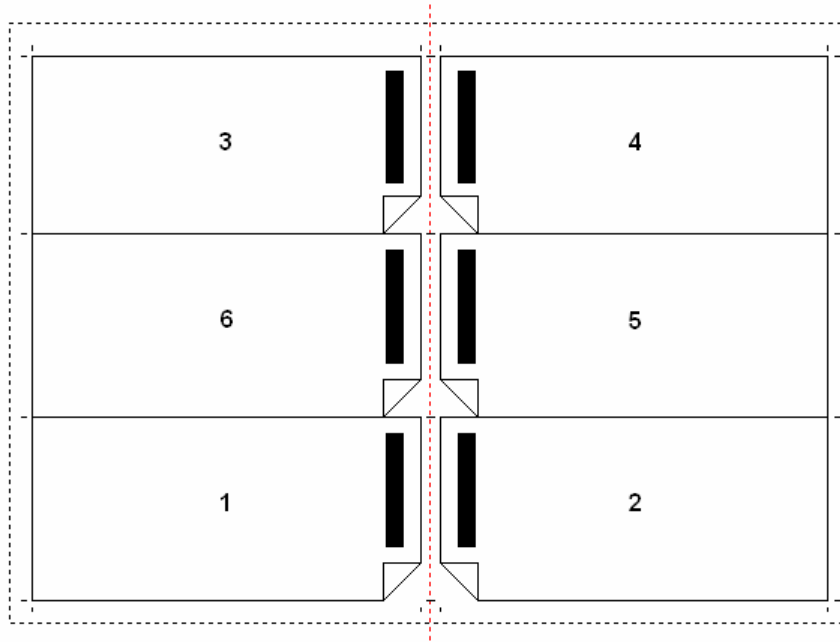
Combine Product Pages for Content Supplied as Reader Spreads

Content for 4-page and 6-page folders is often supplied as reader spreads - a single page for each side of the product. Metrix 1.6 introduces a new product property, "Combine Pages", which when set to true, causes Metrix to create a single Preps® template independent page for all pages in the product. Metrix will even automatically create dashed line marks in the Preps template to indicate the position of the folds.

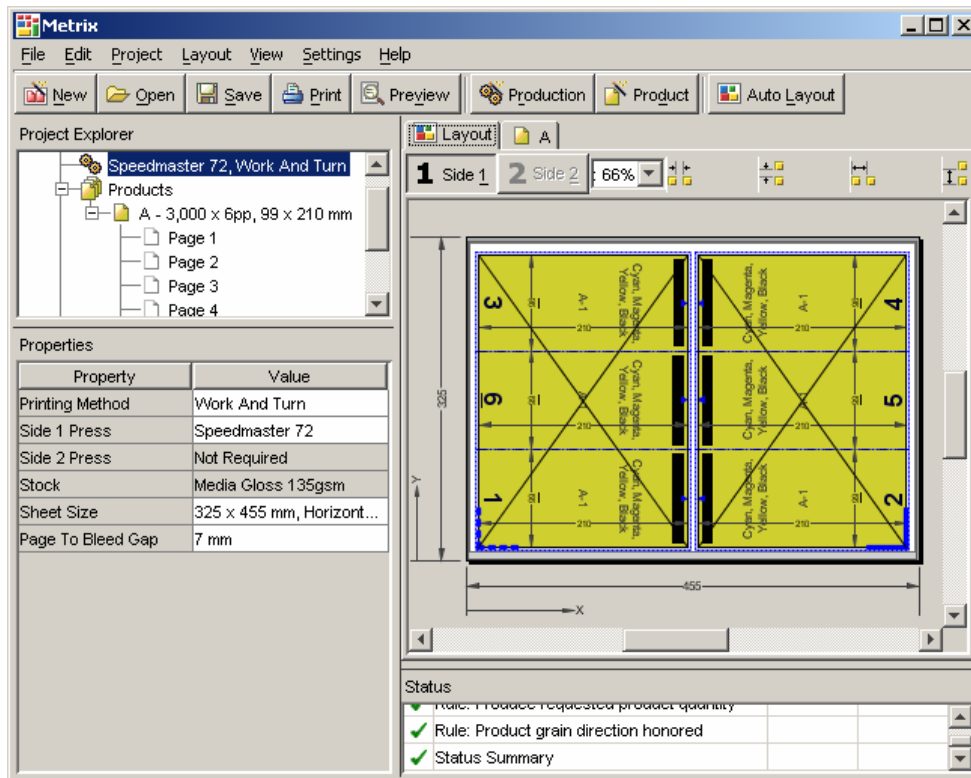
Below is a screen shot of a normal, non-combined, 6-page, printed work and turn.



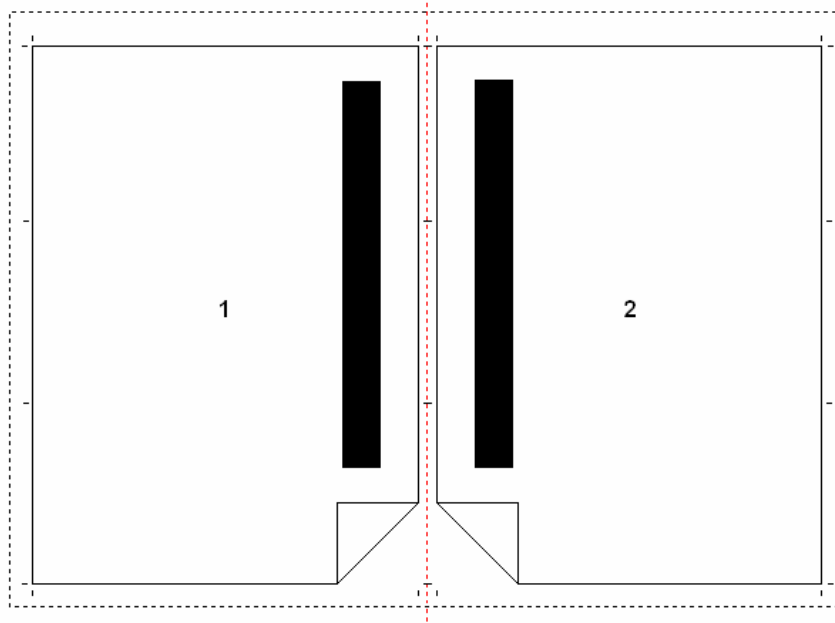
Pictured below is a representation of how the Preps template would normally be created - six individual pages, each with crop marks positioned appropriately around each corner.



Below is a screen shot of the 6-page with the Combined Pages property set to true.



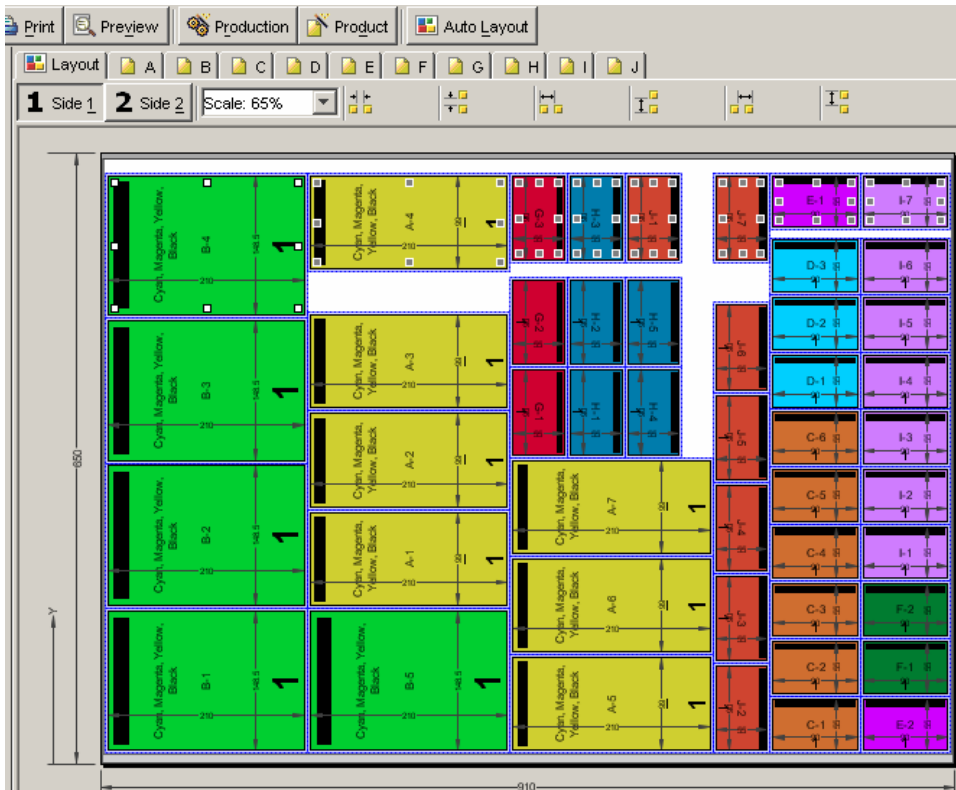
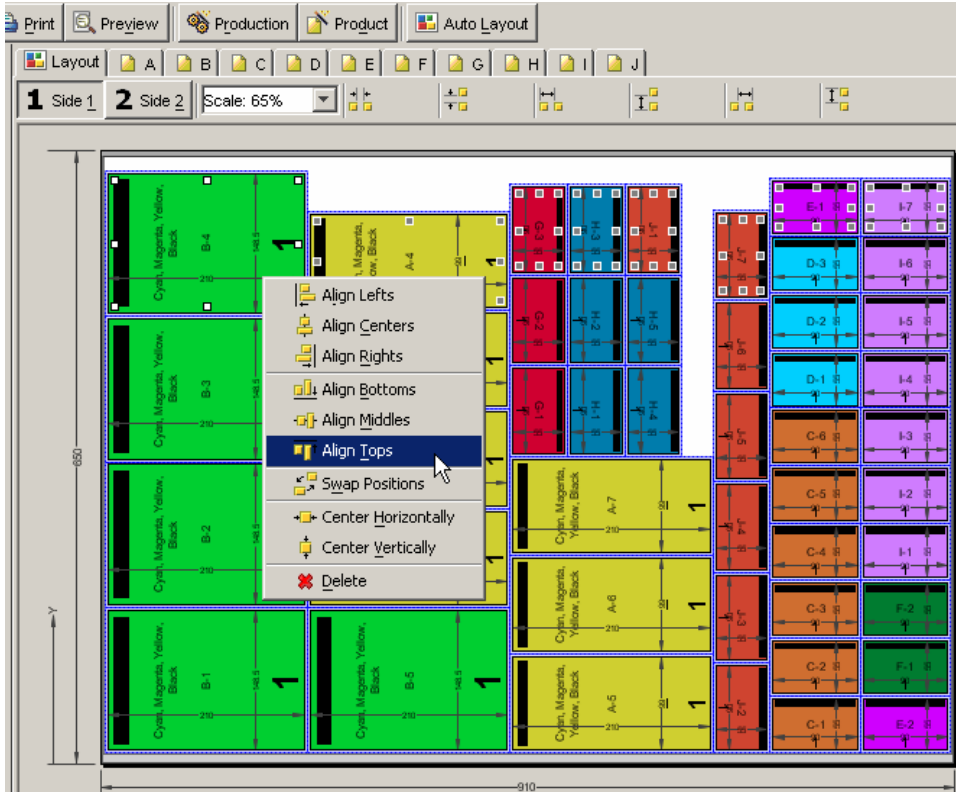
Below is a representation of how the Preps template would appear in Preps with the new Combined Pages property set to true - one independent page for each side, with crop marks positioned around each corner, and line marks positioned around the edges of the product to indicate the position of the folds.



Note: for both crop marks and fold marks, Metrix ensures that no marks are created if they would go too close to another page, as determined by the user's settings.

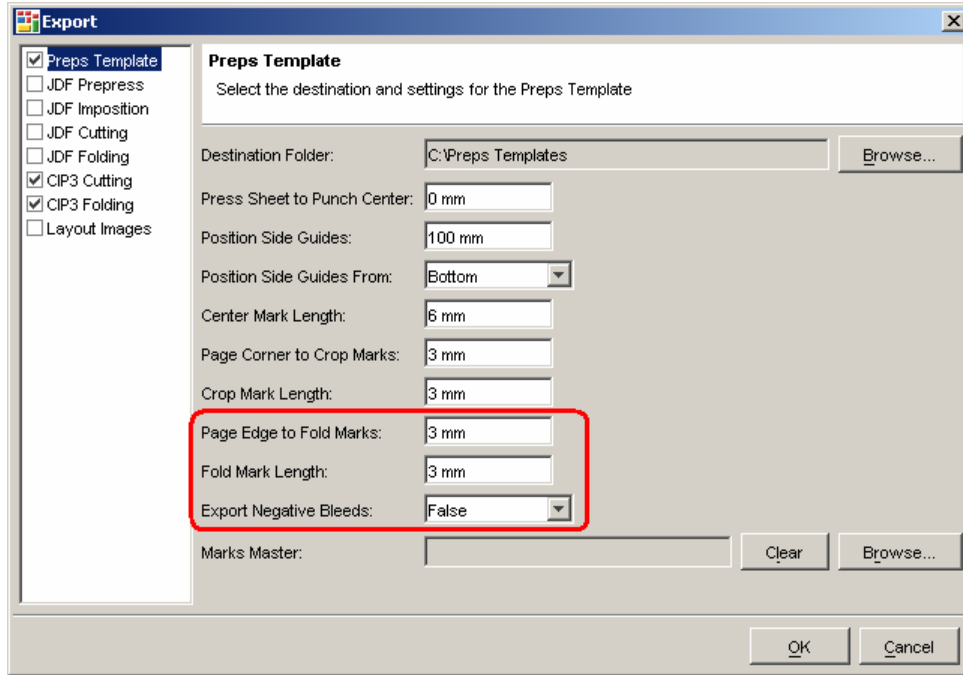
New Popup Menu for Editing Layouts

Metrix 1.6 introduces a popup menu displayed by right mouse clicking anywhere in the Layout View. This popup menu contains the most common manual layout editing functions.



New Preps[®] Template Settings

When a folded product's pages are combined into a single independent page (see the new Combined Pages feature above) line marks are automatically created to indicate the positions of the folds. To control how these fold marks are created, Metrix 1.6 has two new settings, "Page Edge to Fold Marks" and "Fold Mark Length".



A new "Export Negative Bleeds" setting gives users the option to pass any negative page bleed values to the Preps template. Prior to version 1.6, all negative bleed pages were simply written to the Preps template as zero.

Find out more at:

www.lithotechnics.com

Copyright © 2005 LithoTechnics Pty Limited. Metrix is a trademark of Outback Software Pty Limited and may be registered in certain jurisdictions. Other company, brand, or product names are for identification purposes only and may be trademarks or registered trademarks of their respective holders. Data subject to change without notice.

July 21, 2005